

Installation

This chapter describes the hardware and software requirements and provides the instructions for installing the SIMS software to your PC.

Hardware and Software Requirements

To use the SIMS software you will need a personal computer that meets the requirements listed below.

System requirements:

- Microsoft Windows® XP/Vista/7/8/10
- 400 MHz Pentium processor or equivalent (minimum); 1GHz Pentium processor or equivalent (recommended)
- 96 MB of RAM required, 256 MB of RAM recommended
- Hard-disk requirements will vary based on the number of athletes and the degree of detail you are recording. For most users, 1 MB per 100 athletes, per year, will suffice. The software itself requires 50 MB hard-disk space.

Microsoft .NET Framework 3.5 system requirements:

The SIMS installer will automatically download and install .NET Framework 3.5 if it is not detected on your system.

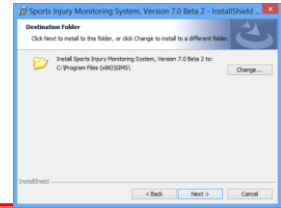
- If .NET Framework 3.5 is not already installed on your system, up to 500 MB additional hard disk space may be required.
- If you will be installing to multiple workstations, it is recommended that you download the full .NET Framework 3.5 package, and install to each workstation prior to installing SIMS. This will avoid the installer having to download the framework from each workstation. The full .NET Framework 3.5 package can be downloaded from: <http://download.microsoft.com/download/2/0/e/20e90413-712f-438c-988e-fdaa79a8ac3d/dotnetfx35.exe>
- For help determining the versions of .NET installed on your workstation, please follow this link: <http://msdn.microsoft.com/en-us/kb/kb00318785.aspx>

Installing SIMS

1. **Close SIMS on all workstations.** *This step does not apply if you are installing SIMS for the first time.*
 - After updating your installation, SIMS will attempt to update your database. If the database is open on any workstation, SIMS will be unable to update the database. Also note that once the SIMS database has been updated it will be inaccessible from other workstations until those, too, have been updated.

2. Install SIMS.

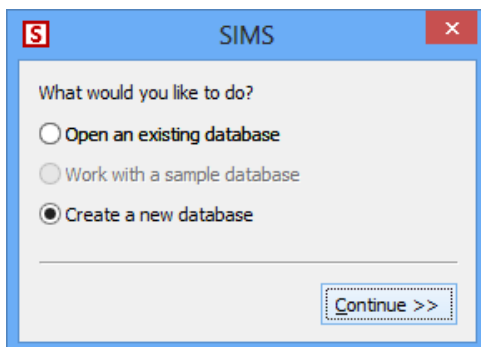
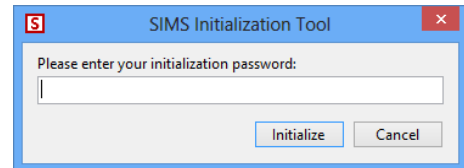
- Download the SIMS installation file using the link provided in your email.
- Run the installation file and enter the password (also provided in your email) when prompted.



Local Installation Required The installer will attempt to install SIMS to a local drive by default, but during installation you do have the option to change the installation location. If you choose to change the location, be sure to select a local drive. It's ok if your *database* resides on a network drive, but installation of the software to a network drive is not supported, and will result in errors when SIMS is run.

3. Initialize. *This step is only necessary if you are installing SIMS for the first time on a workstation. If you have not yet purchased SIMS, you may select Evaluate SIMS from the prompt that appears when you start SIMS.*

- If you have purchased SIMS, you were sent an email with a link to your initialization file. Click the link to download and open the file, and enter your password when prompted. **The password for your initialization file was included in your purchase email. In most cases, the password is the email address of the primary recipient of the purchase email.** Click *Initialize* to initialize your workstation for use with SIMS. **Note: If your initialization file was issued with SIMS 5.1 or earlier, it will not work with versions 5.2 and later. Please contact support@flantech.net for an updated initialization file.**
- Start SIMS using the shortcut on your desktop.



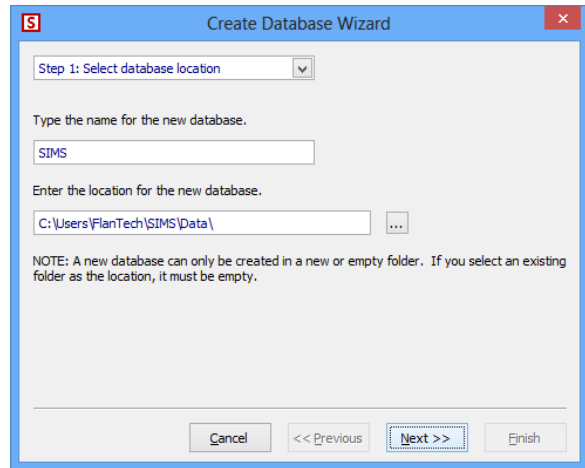
- If you have not previously established a database, you will be prompted to open or create one.

If you have an existing database, select *Open an existing database* and click *Continue*. Select your database when prompted.

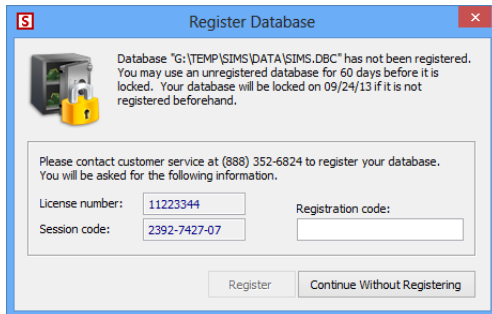
If you do not have an existing database, select *Create a new database* and click *Continue*.

4. Create Database. *The following screens will appear only if the Create a new database option was selected in step 3.*

- **Step 1.** Select the name and location you want to use for the SIMS database, then click *Next*. If the database location does not exist, you will be prompted to create it.
- **Step 2.** If desired, you can copy the settings from an existing SIMS database. In most cases you will select *Use the SIMS default settings* option. Click *Next* to continue.
- **Step 3.** The final step allows you to review your selections before continuing. Once you are satisfied with your selections, click *Finish* to create your database.



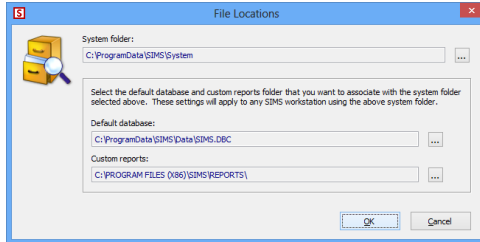
5. Register Database. *Once your software has been initialized, you will be prompted to register any database that you attempt to open. Each database need be registered only once.*



- Please contact SIMS customer service at the number shown in the *Register Database* prompt to register your database.
- You may work with a database for 60 days without registering it. After sixty days, the database will be locked. Once a database is locked, you must register it before it can be opened.

Sharing Your Data on a Network

Your SIMS database can be shared to allow multiple workstations to work with it simultaneously. Please follow these steps to share your SIMS database.



1. **Install SIMS.** If you have not done so already, install SIMS and initialize according to the directions above.
2. **Check File Locations.** From the SIMS menu, choose *Tools/Options* and click the *File Locations* button on the *Workstation* tab. Note the paths of the *System folder* and *Default database*.
3. **Move Shared Folders to Server.** Quit SIMS and move the System and Data folders (see Step 2) to the desired location on your server. **Make sure that all SIMS users have full permissions/rights to the two folders.**

Networking on Windows Server 2008 and Windows Server 2008 R2 with SMB2

Microsoft has acknowledged that the Server Message Block version 2 (SMB2) protocol may cause stability problems with applications such as SIMS that require real-time file information on files accessed over a network. These problems typically reveal themselves in SIMS as errors resulting from corrupted index files. Microsoft has released two hotfixes, linked below, to resolve this issue. Note that the hotfixes may be required on both the server and the SIMS workstations.



- <http://support.microsoft.com/kb/2028965>
- <http://support.microsoft.com/kb/2618096>
- Also, please ensure the latest Windows service packs have been installed to both the server and the SIMS workstations.

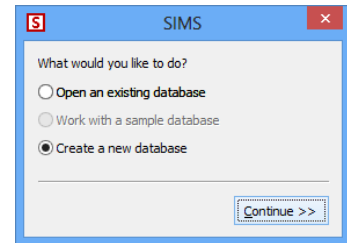
Networking on NetWare Servers



Novell NetWare users may need to turn off file caching and opportunistic locking (OPLOCK) settings on the client workstations. Please consult your NetWare documentation and the link below for more details.

<http://www.novell.com/support/php/search.do?cmd=displayKC&externalId=10091561>

4. **Reconfigure SIMS.** Restart SIMS.
 - a. If you have *moved* the **System** folder as described in Step 3 (as opposed to having copied it):
 - You will receive an *Invalid System Folder* message; click *OK* if you receive this message.

- A *Select Directory* window will appear. Browse to the System folder that now exists on your server. Highlight it and click *Select*.
- b. If you have moved the **Data** folder as described in Step 3 (as opposed to having copied it):
- You will receive an *Initialization Error* message stating that your database could not be found; click *OK* if you receive this message.
 - A prompt will appear giving you the option to *Open an existing database* or *Create a new database*; cancel from this window using the  or  button.



- c. From the SIMS menu, choose *Tools/Options* and click the *File Locations* button on the *Workstation* tab. Use the browse button  located next to the *System folder* input box to select the **System** folder that resides on your server. Then, use the browse button  located next to the *Default database* input box to select the database contained in the **Data** folder that now resides on your server. Click *OK* to save your changes, and exit SIMS.

Use UNC Paths, not Mapped Drive Letters

When configuring the File Locations settings for a shared network drive, it is strongly recommended that you use a UNC path (e.g., `\\MY-SERVER\`) rather than a mapped drive letter (e.g., `X:\`) for the *System folder* and *Default database*. This can help to avoid certain networking issues with your database.

- d. Restart SIMS. Your database should open automatically. If it does not, repeat step 4c.
5. **Configure Subsequent Workstations.** On each remaining workstation, install and initialize SIMS as described in the previous section. Once initialized, follow the instructions in Step 4 above.