

## Installing SIMS for the Palm to your computer

**IMPORTANT:** If you are running a previous version of the SIMS for the Palm (SFP) software, any SFP data currently on your handheld will be lost after installing this version. Any handheld data that has not been HotSynced with the desktop should be HotSynced before continuing.

### 1. Insert installation CD and follow the on-screen prompts.

- Installation will begin automatically on most computers. If it does not, click the **Start** button and choose **Run....** Then type `D:\SETUP.EXE` in the input box and click **OK**. *Note: If applicable, replace D: with the correct drive letter for your CD-ROM drive.*
- During installation you will have to opportunity to select the destination folder of the installation. It is **not** necessary that you install SIMS for the Palm to the same location as the desktop version of SIMS. **NOTE: If installing a new version of SFP you will want to choose the same folder as the previous installation.**


### 2. Start the desktop version of SIMS.

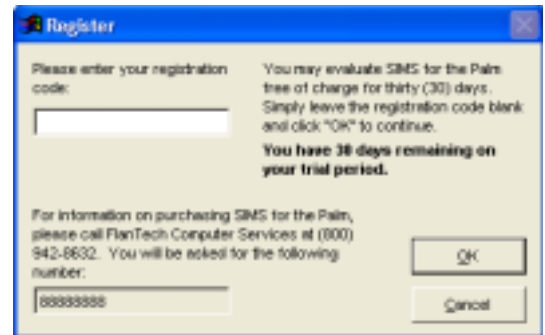
- If installation was successful, you will notice a new button on your SIMS toolbar. It is this button you'll be using to HotSync your SIMS data between your desktop and handheld device.



## Installing SIMS for the Palm to your handheld device

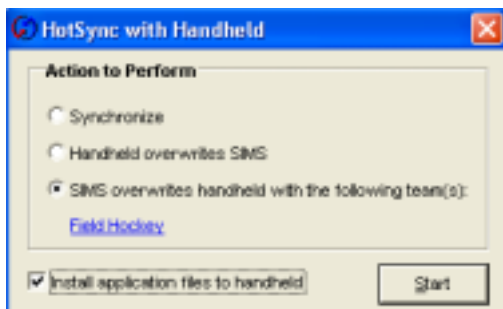
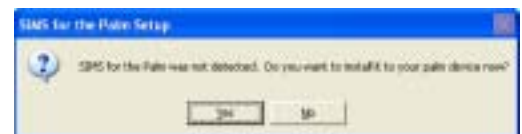
### 3. Register SIMS for the Palm.

- Click the  button on the SIMS toolbar. If you have not previously registered SIMS, you will be asked to enter your registration code. Your registration code can be found on the sleeve of your SIMS for the Palm CD.
- If you do not have a registration code, you may evaluate SIMS for the Palm for thirty (30) days free of charge. Just leave the registration code blank and click **OK**.



### 4. Initiate installation

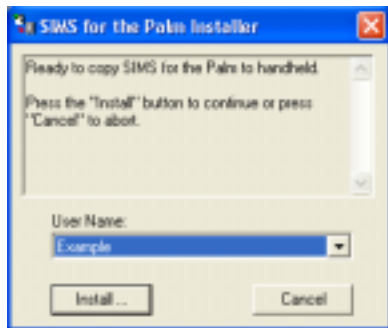
- If you **have not** previously installed SIMS for the Palm to a handheld device, you will be asked if you want to install it now. Answer **Yes!**



- If you **have** previously installed SIMS for the Palm to a handheld device from this computer, the **HotSync with Handheld** window will be displayed. Select the **SIMS overwrites handheld with this team** option and select the team(s) you want to send to your handheld device. Then check the **Install application files to handheld** checkbox and click **Start**.

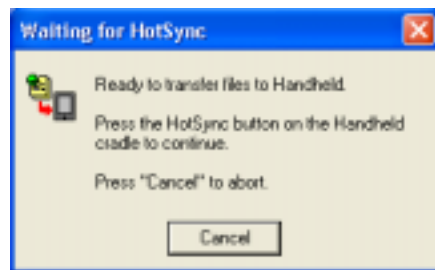
## 5. Install application files to your handheld device

- If your *HotSync Manager* application is running, please follow the instructions on the screen to close it. Click **OK** when the *HotSync Manager* has been closed.



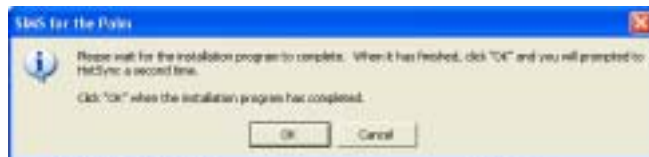
- From the ***SIMS for the Palm Installer*** window, select the handheld user name you want to use for the HotSync and click the ***Install*** button.

- You will be prompted to HotSync with your handheld device. Insert your handheld device into the cradle and press the HotSync button (on the cradle) to continue.



## 6. Install data files to your handheld device

- Once the ***SIMS for the Palm Installer*** has finished installing the handheld application files, click **OK** from the dialog window. **Make sure** that you do not click **OK** until the ***SIMS for the Palm Installer*** window has closed.



- You will be prompted to perform a second HotSync. Insert your handheld device into the cradle and press the HotSync button (on the cradle) to continue.
- The ***HotSync with Handheld*** window will close when the HotSync has completed.



## 7. Begin using SIMS for the Palm

- Remove your handheld device from the cradle and power on if necessary.
- Locate the SIMS icon and tap once to begin.
- For more information on using SIMS for the Palm, please consult the user manual. To view the manual, click the **Start** button, select **Programs** (or **All Programs** if you're using Windows XP), select **SIMS** and click on **SIMS for the Palm User Manual**.

