

Installation

This chapter describes the hardware and software requirements and provides the instructions for installing the Pocket SIMS software to your PC and handheld device.

Hardware and Software Requirements

To use the Pocket SIMS software you will need a personal computer and a handheld device that meet the requirements listed below.

Device requirements:

- Windows Mobile 5.0, or Windows Mobile 6.x operating system. Not compatible with non-touchscreen operating systems such as Windows Mobile 5.0 for Smartphone and Windows Mobile 6 Standard.
- 12-15 MB available program memory

System requirements:

- SIMS version 4.5 or later (desktop version, see [website](#) for requirements)
- ActiveSync 3.5 or later on Windows XP; Windows Mobile Device Center on Windows Vista/7.

Installing Pocket SIMS

IMPORTANT: If you are running a previous version of Pocket SIMS, any Pocket SIMS data currently on your handheld will be lost after installing this version. Any handheld data that has not been synced with the desktop should be synced before continuing.

1. Install Pocket SIMS.

- Before installing Pocket SIMS, ensure your device is connected to your desktop computer, and that you can synchronize your device using ActiveSync (on Windows XP) or Windows Mobile Device Center (on Windows Vista/7).
- Download the Pocket SIMS installation file using the link provided in your email.
- Run the installation file and enter the password (also provided in your email) when prompted.
- During installation you will have to opportunity to select the destination folder for the installation. It is **not** necessary that you install Pocket SIMS to the same location as the desktop version of SIMS. **NOTE: If installing a new version of Pocket SIMS you should choose the same destination folder as the previous installation.**
- While installing, you may be prompted to install application files to your handheld device. Please click **Yes** when prompted.


- Windows Mobile 5 devices may display a “program is from an unknown publisher” message during installation. You may safely answer **Yes** if prompted.
- Windows Mobile 6.5 devices may display a message indicating “a later version of the .NET Compact Framework is already installed”. This message can be safely dismissed by clicking **OK**.

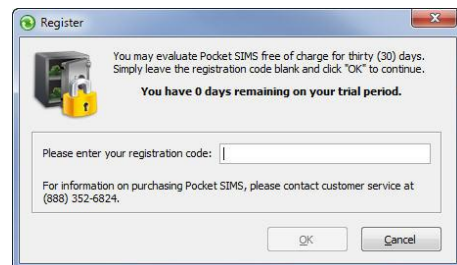
2. Start the desktop version of SIMS.

- If installation was successful, you will notice a new button on your SIMS toolbar. This is the button you’ll use to sync your SIMS data between your desktop and handheld device.

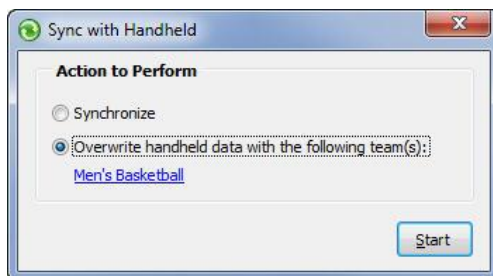


3. Register Pocket SIMS

- Click the  button on the SIMS toolbar. If you have not previously registered SIMS, you will be asked to enter your registration code.
- If you do not have a registration code, you may evaluate Pocket SIMS for thirty (30) days free of charge. Just leave the registration code blank and click **OK**.



4. Send data to handheld



- Connect your handheld device to the computer.
 - Select the *Overwrite handheld data* option and click the link to select the teams you want to send to the handheld.
 - Click the **Start** button to begin transferring your data to the device.
- *Note: In general, you’ll use the Synchronize option rather than the Overwrite handheld data option when transferring data between your desktop and handheld. Please view the Synchronizing Data section for more details.*