

SIMS

Training Room Companion

User Manual

Version 1.0

Copyright

Copyright © 2007 FlanTech Inc. All rights reserved.

Trademarks

SIMS is a trademark of FlanTech Inc.
Microsoft Windows and Windows NT are registered trademarks of Microsoft Corporation.
Other brand and product names are registered trademarks or trademarks of their respective holders.

Disclaimer and limitation of liability

FlanTech Computer Services assumes no responsibility for any damage or loss resulting from the use of this manual.

FlanTech Computer Services assumes no responsibility for any loss or claims by third parties which may arise through the use of this software. Be sure to make backup copies of all important data on other media to protect against data loss.

Important: Please read the FlanTech Computer Services End User Software License Agreement before using the accompanying software program(s). Using any part of the software indicates that you accept the terms of the FlanTech Computer Services End User Software License Agreement.

Software download available

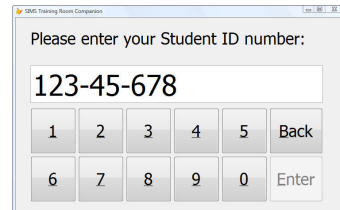
The latest version of SIMS Training Room Companion is available for download from our website at http://www.flantech.net/sims_download.html . A password is required in order to install the download; please contact technical support for more information.

Overview

The SIMS Training Room Companion (SIMS-TRC) has been designed to ease the data-entry burden on the athletic trainer by allowing the athlete to log his or her own treatment record as they enter the training room. SIMS-TRC connects to your existing SIMS database and directly logs injury maintenance entries. SIMS itself does not need to be installed in order to use SIMS-TRC.

The concept is simple:

- 1. ID input.** The athlete enters their ID via keyboard, touch screen or by using an identification card with a magnetic stripe reader (MSR).



The screenshot shows a window titled "SIMS Training Room Companion" with a text input field containing "123-45-678". Below the field is a numeric keypad with buttons for digits 1-9, 0, and "Enter", along with a "Back" button.

- 2. Injury selection.** If an ID match is found in the SIMS database, a list of the athlete's *open* injuries and illnesses is displayed. The athlete selects the injury/illness for which they are to receive treatment. If none of the listed injuries apply, the *Not Listed* button can be used to record a generic entry that is not injury-specific.



The screenshot shows a window titled "SIMS Training Room Companion" with the name "John Smith" displayed. Below the name is a list of injuries: "Right Ankle sprain", "Left Finger(s) strain", and "Right Shoulder sprain". There are three buttons at the bottom: "Not Listed", "Select", and "Cancel".

- 3. Feedback.** SIMS-TRC will automatically create an injury maintenance record in the SIMS database, based on the ID and injury that were selected. The user is notified that their record was logged successfully, and the ID input screen is displayed again, awaiting input from the next user. At this point, you will be able to see the new record from Injury Maintenance view on any SIMS workstation.

That's all there is to it! At the end of the day, rather than creating the various injury maintenance records, the athletic trainer needs only to review the records that were input via SIMS-TRC throughout the day.

Installation

This chapter describes the hardware and software requirements and provides the instructions for installing the SIMS Training Room Companion to your PC.

Hardware and Software Requirements

To use the SIMS Training Room Companion you will need a personal computer that meets the requirements listed below.

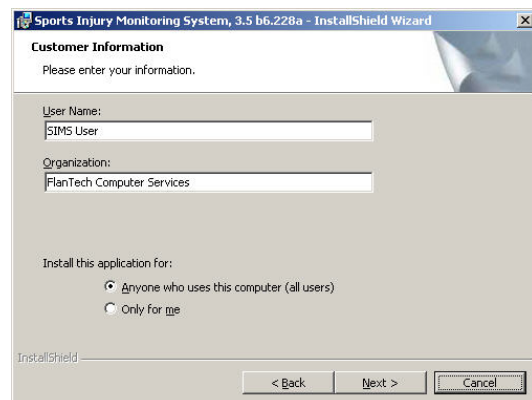
System requirements:

- Microsoft Windows® 98/2000/XP/Vista
- Pentium 200-MHz or faster processor (or compatible)
- 32 MB of RAM required, 64 MB of RAM recommended
- Access to a Sports Injury Monitoring System (SIMS) version 4.0 (or later) database
- OPOS compatible magnetic stripe reader (*optional*)

Installing and Configuring SIMS Training Room Companion (SIMS-TRC)

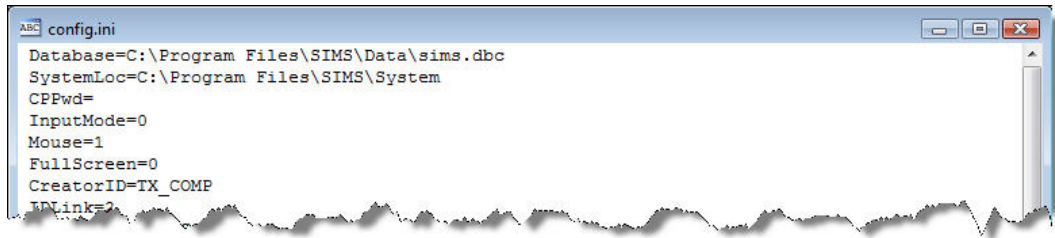
1. Installation.



- Download the SIMS-TRC installation file using the link provided in your email.
- Run the installation file and insert the password (also provided in your email) when prompted.
- During installation you will be prompted to install the software for ***Anyone who uses this computer*** or ***Only for me***. If you will be logging in as any other user to run SIMS Training Room Companion from your workstation, you should choose ***Anyone who uses this computer***.



2. Configuration.

- Start SIMS-TRC using the shortcut on your desktop.
- The default SIMS-TRC configuration expects to find SIMS database file "SIMS.DBC" in folder "C:\Program Files\SIMS\Data". If this file does not exist, you will receive an *Unable to open database* message. If you receive this message, click *OK* and the SIMS-TRC configuration file will appear.

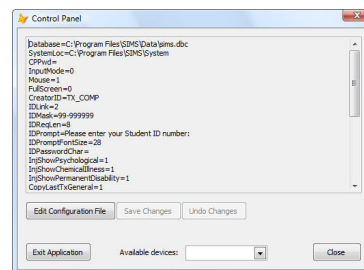
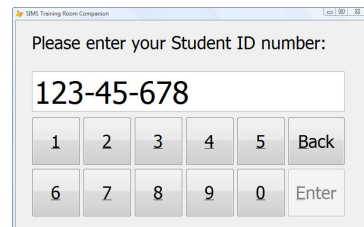


Please see the *Configuration Settings* section for descriptions of the available configuration settings. Once you've made the appropriate changes, click the  or  button and click *Yes* to save your changes when prompted. SIMS-TRC will close automatically. Your settings will take effect the next time the application is run.

- If database file "C:\Program Files\SIMS\Data\SIMS.DBC" **is** found, SIMS-TRC will open directly to the user ID input screen. In order to edit the configuration settings, open the control panel by pressing *CTRL+ALT+P* on the keyboard.

From the Control Panel window, click *Edit Configuration File*. You will now be able to make changes to your configuration settings.

Please see the *Configuration Settings* section for descriptions of the available configuration settings. Click *Save Changes* once you've made the appropriate changes. Finally, click *Exit Application* to close SIMS-TRC. Your settings will take effect the next time the application is run.





3. Registration.

- If you have purchased SIMS-TRC, please contact customer support at (888) 352-6824 to register your software.

Configuration Settings

This section explains the settings available in the configuration file.

Database	The path and file name of your SIMS database. If you are not sure of the database location, consult the File Locations settings from a SIMS workstation. (Choose <i>Tools/Options</i> from the SIMS menu, and select the <i>File Locations</i> tab.)
SystemLoc	The path and file name of your SIMS system folder. If you are not sure of the system folder location, consult the File Locations settings from a SIMS workstation. (Choose <i>Tools/Options</i> from the SIMS menu, and select the <i>File Locations</i> tab.)
CPPwd	The control panel password. If you provide a password, you will be prompted to enter it in order to access the control panel.
InputMode	The primary input method. 0 = Keyboard 1 = Magnetic Stripe Reader (MSR)
Mouse	Enables or disables the mouse cursor. 0 = Mouse cursor is not visible 1 = Mouse cursor is visible
FullScreen	Determines whether application fills the entire screen. 0 = Application runs in a window 1 = Application occupies entire screen When running in full-screen mode, you must exit the application via the control panel, since the  or  button is not available from this mode.
CreatorID	The Creator ID recorded in the maintenance record. In SIMS, injury maintenance records store the ID (i.e., the login name) of the user who created the record. For this value, you should select a generic ID that indicates the record was created from SIMS-TRC. This value should be ten characters or less in length.
IDLink	The ID in SIMS to which the user input will be linked. 1 = Identification # 2 = Alternate ID# 3 = Alternate ID# (2)
IDMask	The input mask of the identification number. Typically, this should match the input mask defined in SIMS. To check this value, open any athlete record in SIMS and right-click the "Identification #" label. Choose "Change field labels and masks" to see the input mask for each ID field.
IDReqLen	The minimum required length of the identification number.
IDPrompt	The prompt that appears at the top of the ID input screen.

IDPromptFontSize	The font size of the prompt that appears at the top of the ID input screen.
IDPasswordChar	The masking character for the identification number. If you do not want identification numbers displayed on the screen as they are input, you can define a masking character. Typically, an asterisk (*) is used. In this example, the number "111-22-3333" would appear on the screen as "***-**-*****".
InjShowPsychological	Determines whether psychological illnesses are displayed from the injury selection screen. 0 = Psychological illnesses are not displayed 1 = Psychological illnesses are displayed
InjShowChemicalIllness	Determines whether chemical illnesses are displayed from the injury selection screen. 0 = Chemical illnesses are not displayed 1 = Chemical illnesses are displayed
InjShowPermanentDisability	Determines whether injuries resulting in permanent disability are displayed from the injury selection screen. 0 = Permanent disability injuries are not displayed 1 = Permanent disability injuries are displayed
CopyLastTxGeneral	Determines whether the values from the <i>General</i> tab of the last injury maintenance record are copied to the new record. If enabled, the values will be copied from the most recent injury maintenance record that has the same ID and selected injury as those input by the user. 0 = Do not copy values from last injury maintenance record 1 = Copy values from last injury maintenance record
CopyLastTxNotes	Determines whether the values from the <i>Notes</i> tab of the last injury maintenance record are copied to the new record. If enabled, the values will be copied from the most recent injury maintenance record that has the same ID and selected injury as those input by the user. 0 = Do not copy values from last injury maintenance record 1 = Copy values from last injury maintenance record
CopyLastTxAssess	Determines whether the values from the <i>Assessment</i> tab of the last injury maintenance record are copied to the new record. If enabled, the values will be copied from the most recent injury maintenance record that has the same ID and selected injury as those input by the user. 0 = Do not copy values from last injury maintenance record 1 = Copy values from last injury maintenance record

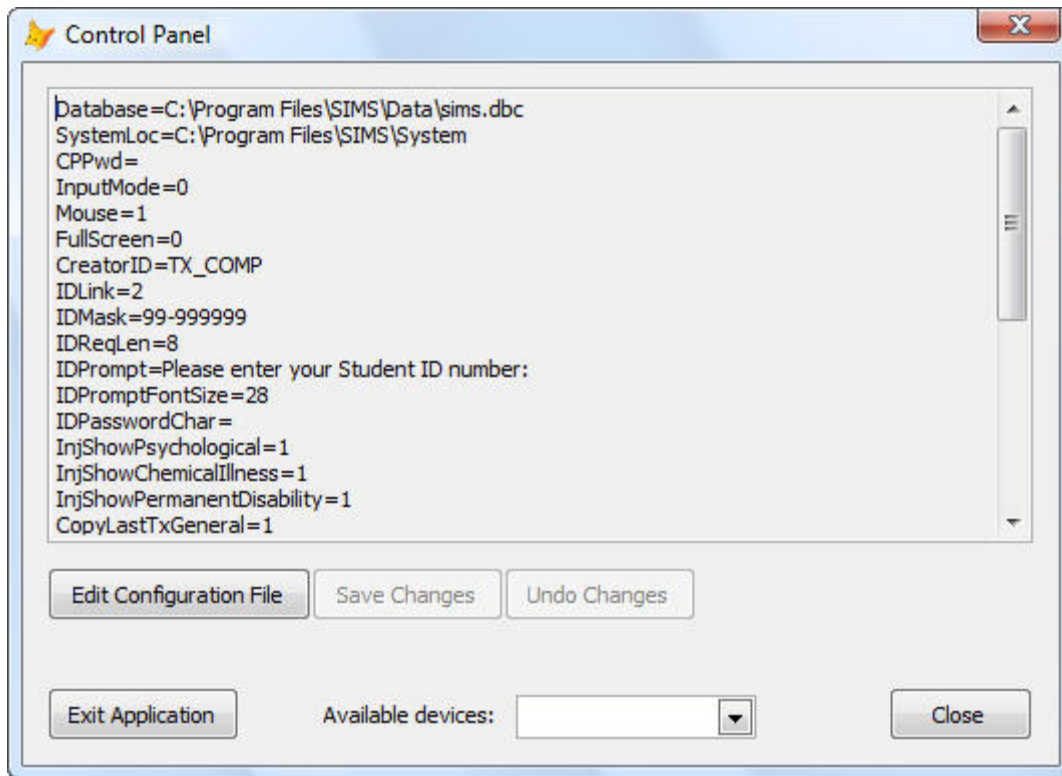
Configuration Settings for Magnetic Stripe Readers (MSR)

This section explains the available configuration settings for magnetic stripe readers.

MSR_Device	The device name of the MSR. Available device names are listed in the <i>Available devices</i> drop-list at the bottom of the control panel. If your device is not listed, it may not be OLE for Retail Point-of-Sale (OPOS) compatible or the OPOS drivers may not be installed.
MSR_Timeout	The timeout setting for the MSR device. This is the length of time SIMS-TRC will spend attempting to take control of the device before giving up.
MSR_DataTrack	The track number that stores the identification number.
MSR_DataStart	The position on the track where the data value (i.e., the identification number) begins.
MSR_DataLength	The number of characters to read from the data track. SIMS-TRC will begin reading the data at <i>MSR_DataStart</i> and will read <i>MSR_DataLength</i> characters to determine the user's identification number.
MSR_Prompt	The prompt that appears at the top of the MSR input screen.
MSR_KeyboardOption	Determines whether the <i>Use Keyboard</i> option is available from the MSR input screen. This allows the user to manually input their ID via the keyboard as an alternative to using the MSR.

Control Panel

This section explains the features available from the control panel. The control panel is mainly used to configure SIMS-TRC, and is invoked by pressing CTRL+SHIFT+P from the ID input screen. If a control panel password has been defined (see the *CPPwd* configuration setting), you will be prompted for the password before the control panel is displayed.



The following features are available from the control panel:

- | | |
|--------------------------------|--|
| Edit Configuration File | Enables edit mode for the configuration file edit box. |
| Save Changes | Saves any changes made to the configuration file edit box and disables edit mode. |
| Undo Changes | Reverts any changes made to the configuration file edit box and disables edit mode. |
| Exit Application | Exits the SIMS-TRC application. Typically used to close SIMS-TRC when full-screen mode is enabled (see the <i>FullScreen</i> configuration setting). |
| Available Devices | Shows the MSR devices available to SIMS-TRC. The devices listed are for reference to aid in setting the <i>MSR_Device</i> configuration setting. |
| Close | Closes the control panel. |